

WINHAN INDUSTRIAL COMPANY PROFILE

www.kkg.tw



KKG

CATALOG

COMPANY PROFILE

- 1 COMPANY OUTLINE
- 2 COMPANY HISTORY
- 4 KKG'S CULTURE
- 4 KKG'S CORE
- 5 MID-TO LONG-TERM VISION
- 6 SALES TRENDS IN YEARS

CORE-COMPETITIVENESS

- 1 R & D CAPABILITY
- 2 MANUFACTURING CAPACITY
- 3 QUALITY ASSURANCE ABILITY
- 4 PERFECT SERVICE SYSTEM

GREEN KKG

- 1 GREEN PURCHASING
- 2 GREEN DESIGN
- 3 GREEN PROCESS

KKG'S PRODUCT

- 1 SERIES OF PRODUCT
- 2 APPLICATION PROGRAM



THE COLLECTION#



here
AND
there



The second factory
Jinwan District Sanzao town
Zhuhai City Guangdong

The first factory
Hoping hsiang, taichung hsien,
taiwan

The third factory
Tangxia Dongguan City
Guangdong

COMPANY OUTLINE

- Company Name: KKG Corporation
- Entrepreneurship: Jan 1992
- Establish Day: Jan 26th 1998
- Enterprise's nature: Taiwan funded enterprises
- Capital(2011): US\$568 million registered capital
US\$2048 total investment
- Total sales(2011): US\$720 million
- Employees' number: 1200
- Business' scope: switches, Jacks, connectors, LED...electronic components
- Factory scale:
 - The first factory land area: 2500 square meters, the building area: 1800 square meters
 - The second factory land area: 1700 square meters, the building area: 1500 square meters
 - The third factory land area: 2300 square meters, the building area: 2000 square meters
- Factory office
 - Taiwan
 - 1 MARKETING (Global)
 - 2 develop new business
 - 3 core parts processing and scheduling
 - 4 research and development (R & D)
 - 5 die / device, tool design & Production
 - Mainland
 - 1 manufacturing (parts and products)
 - 2 mold design and manufacture of repair
 - 3 automation machinery development & Production
 - 4 Chinese domestic and overseas business
 - 5 product development (Chinese domestic)

COMPANY HISTORY

The first production base establish



Add the second production base

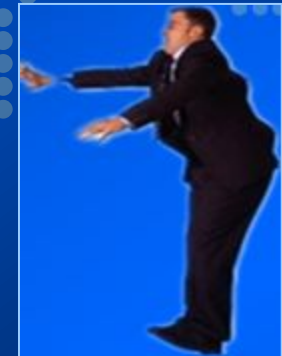
Rated as technology advanced enterprises

Award as the international authentication
of UL ,CSA,VDE

Certified by iso 2008

The introduction of automated machinery

Start to product keyboard switches



Welcome to KKG

KKG'S Philosophy:

To take the route of sustainable development

KKG'S Corporate Culture:

Direct business model

Understand customers' needs

KKG'S Code of Conduct:

- 1 By the rule of international environmental standards**
- 2 Serves society**
- 3 The client is consummate**
- 4 Seek international top-ranking technology level**
- 5 A family for all employees**



KKG'S CORE



MID-TO LONG-TERM VISION

The leading domestic field in Electronic components

VISION

The enhancement
of global brand competitiveness

Sales 1 billions / Profitability 0.1 billions

Target

■ Jump to the top brand

■ Brand competitiveness

■ Customer quality assurance

Promote
Strategy

1. 1 product development & Education
 - Execute strategy focus new product
2. Ensure that the difference of technical strength
 - Develop SPEED/Develop quality improvement
3. Expand the high added value products
 - diversification and advanced product
4. Strengthen global Marketing/Network
 - to open up large enterprises in China and South Korea
5. Improve the Bewin Electronics brand's awareness
 - to ensure the development of large customers

1. Ensure the brand competitiveness
 - A plurality - production base and field of materials
2. The idea of price corresponding survival strategy
 - Raw material / die / production differentiation
3. Innovation for manufacture high efficiency, low cost
 - WORLD TOP TPM factory
4. Save the price of raw material
 - Learning related raw materials development
 - The original thrift - manufacturing activities

1. 6 Sigma quality innovation
 - the challenge of poor quality of ZERO
2. To construct the best manufacturing PROCESS
 - The improvement in TF activity of no defect quality
3. Elite organization / ability class
 - work side by side, reform and innovation
4. Human resources LEVEL-UP
 - human level-up / the education for the company all internal and external

3 set 5S of life and basic Rule compliance

SALES TRENDS IN YEARS



Research & Development Center



Sustain represent the up-to-date technology

Production engineering

Integrated management

Training technical personnel

R & D CAPABILITY

-----Product development

The T organization of development

The development of home appliances and IT products by Switch (I group)
Development of automotive Switch class (II group)
The R/F switch and Connector & LED FRAME (IT product development group)
The development of IT products for high-tech products (IT product development group)

Staff development: 13

Main achievements:

Multi-way s/w (5 way switch) : Mobile phone, GPS navigator, MP3, monitor.....

Vibration s/w : Rotary direction identificate induction switch (Tilt Function) --- Monitor Rotary induction switch

Encoder s/w : Apply to gray code's Pulse switch --- Microwave oven, washing machine etc

Detector s/w : Apply to CD-ROM, DVD-ROM's output switch and note book etc

R / F s/w : Apply to mobile phone, DMB, GPS, WLL terminal, wireless network phone etc

The soft ware of design used :

2D design --- Auto CAD (M2000i)

3D design --- Inventor-10,

Application program--- Catia - V5(HD2)

R & D CAPABILITY

-----Mold development

The T organization of development :

Design team: ensure the development cycle, rapid the improvement of product structure.

Processing team: own advanced mechanical processing equipment, to ensure the accuracy of mold.

Staff development: 7

Main achievements:

Pick-up precision parts and mold development : with the domestic constantly improve, gradually replace imported products – Samsung

Mobile phone product development --- Intena (Samsung), R/F switch

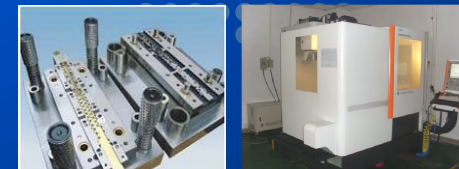
Switch Reel to Reel precision molds development --- Type (Insert automatic injection mold)

The soft ware of design used :

2D design --- Auto CAD (M2000i)

3D design --- Inventor-10, Solid-Works

The analysis system of injection molding --- MAPS 3D (VM Tech)



MANUFACTURING CAPACITY



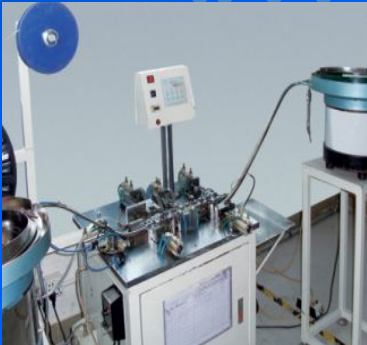
Automatic injection system



Automatic assembly workshop



Encoder automatic oiling



Automatic assembly equipment



Automatic test equipment



Encoder automatic detection

The main production equipment

| The main production equipment | The main holding device | Qualitaty |
|-------------------------------|--------------------------------------|-----------|
| | All kinds of punch | 57 |
| | Vertical injection molding machine | 18 |
| | Horizontal injection molding machine | |
| | Laser marking machine | 26 |
| | Automatic riveting machine | |
| | Automatic assembly machine | 2 |
| | Automatic testing machine | 16 |
| | Automatic oil machine | 36 |
| | Automatic packaging machine | 46 |
| | Ultrasonic welding machine | 4 |
| | | 3 |
| | | 3 |

QUALITY ASSURANCE ABILITY

Professional measurement:

Have a professional and precision measuring equipment.

Reliability validation:

Specialized laboratories for the reliability verification, analysis.

Green product:

Products meet the requirements of Reach, RoHS, HF

Quality system:

The quality is increasing maturity and own the RoHS management system.

Quality management system:

Through the ISO-9001 quality assurance system to implement the assurance of quality.



The equipment list of reliability test

| Distinguish | The main holding device | Qualitaty |
|-----------------------------------|---|-----------|
| The reliability of test equipment | Salt spray test machine | 1 |
| | Constant temperature and humidity machine | 1 |
| | Steam aging test machine | 1 |
| | Welding machine | 2 |
| | Reflow Tester | 2 |
| | Life test machine | 12 |
| | Bubble tester | 1 |
| Measuring equipment | 3 coordinate measuring machine | 1 |
| | Plating thickness tester | 2 |
| | Height Gauge | 3 |
| | Force analyzer | 1 |
| | Tool microscope | 6 |
| | Hardness testing machine | 1 |

ORT reliability



The ORT test project : Strength test

Optical test

Sulfide test

solder test

Constant temperature and humidity test

resistance to soldering heat test

Hardness test

salt spray test

contact resistance test

Withstand voltage test

High and low temperature test

Insulation resistance test

Life test

product safety testing

PERFECT SERVICE SYSTEM



Innovation
Design

3

Technology

5

Coordination

2

Site
Support

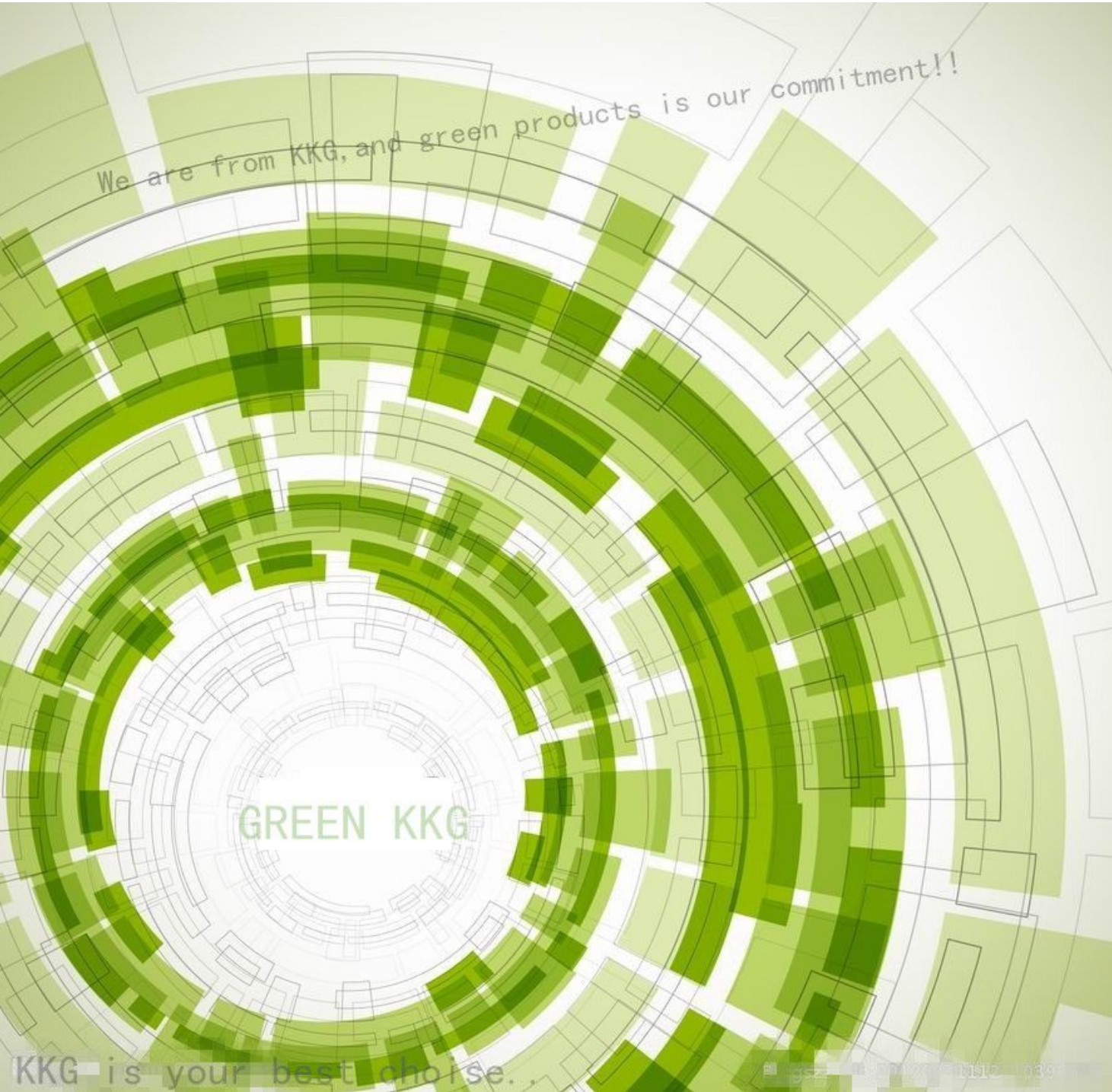
2

Customer
Service

6

Search
Marketing

2



GREEN POLICY

Sustained to cut harmful substances

Social responsibility

Product the green productions

GREEN KKG---Green Purchasing

| | Project | Import Situation |
|---|-----------------|--------------------------------|
| 1 | RoHS | Import |
| 2 | HF halogen-free | Import |
| 3 | REACH | Import |
| 4 | RoHS 2.0 | According to customers demands |



HF
无卤

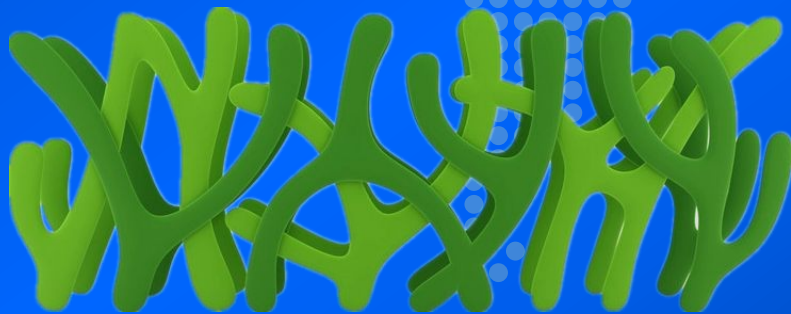


Green Design

Three key factors of green design:
Reutilization, Recycling and resource saving

Some important ways:

- 1 Design of green materials
- 2 Design of green structure
- 3 Design of green consumption
- 4 Design of green packaging
- 5 Design of green manufacturing process

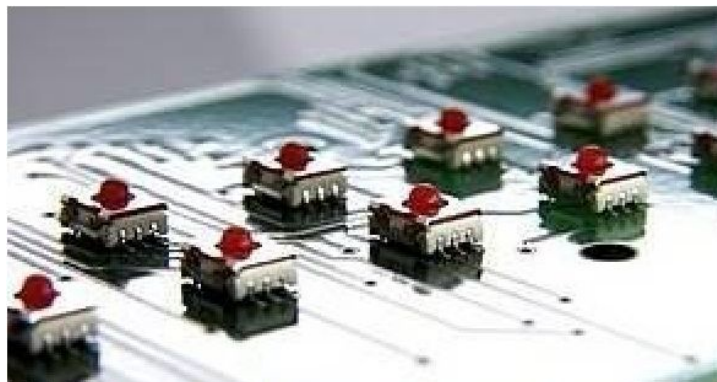


"Traditional Testing Approach"



Green Process





THE WORLD OF KKG



Lamp switches and Mul-switches' Introduction

Lamp switches' Features:

1. High sensitive, sounds silvery, feeling and rhythm are perfect;
2. With a fixed-stand and covers in many kinds of structure and color
3. It can be mounted with single color led and double color or 3 colors led according to preference;
4. It can be assembled in different ways: DIP&SMT; with Pushbutton and tact for operating.

Applications:

TV, DVD, instruments and meter equipment, audio apparatus



Mul-switches' Features:

- 1 Divided into the rotary switch, five to switch, lever switch series.
- 2 The product can provide multiple operating direction, form kinds of switches
- 3 SMD install

Application:

Industrial mouse, digital products, game handle: PS3, XBOX360, WII F-J08K-5B10K-1



Pushbutton switches and Toggle switches'

Introduction

Features:

1. There are 2 operating modes: Self-Lock and Non-Lock
2. The switch sounds silvery, feeling and rhythm are perfect
3. There are many dimensions available
4. The state of terminals and height of pushbutton can be designed according to customer's requirements

Applications:

computer ancillary equipment, TV audio equipment, all kinds of small autoimmunization equipment and instruments etc



Features:

- 1) Available for PUSH, SAWY, SPDT, DPDT design etc;
- 2) High sensitive, sounds silvery, feeling and rhythm are perfect;
- 3) We have got relevant safety certificates;
- 4) It suits some kinds of voltage, the way of terminal soldering can be choosing

Applications:

instrument and meter equipment, household appliances equipment, office equipment, automobile electronic products etc

Keyboard switches and rocker switches' Introduction



Keyboard switches' Features

1. Desktop Profile, 0.60 Inch(15.2mm) From PCB (No Keycap)
2. Choice Of Feel: Linear, Soft Tactile, Click Tactile
3. PCB Or Frame Mount
4. Long Life 50 Million Operations
5. 4mm Travel
6. LED, Diode Or Jumper Option
7. 12V Maximum AC/DC
8. Current Rating: 10mA
9. Insulation Resistance: $\leq 100M \Omega$ At 100V DC

Applications:

Cash Registers, Computer Keyboards, Industrial Equipment
And Man-Machine Interface

Rocker's Feature:

Small behind panel dimensions for snap-in mounting in tight spaces.

Terminals are epoxy sealed to lock out flux, solvents, and other contaminants.

Momentary and alternate action circuits available in the same space-saving body size.

Snap-acting contact mechanism provides sensitive actuation with audible feedback; Quick-make, quick-break characteristic limits arcing and prolongs electrical life.

Applications:

air cleaning systems, monitors, photocopiers, printers, fax machines and refrigerators etc.



Tact switches and detector switches' introduction



Tact switches' Features:

1. Good feeling and long life;
2. Micro-Miniature, light operating;
3. Snap-in type, can be mounted directly on P. C. Board and good for electrostatic discharge;
4. It has a lot of choices for button shape and height and it is easily to install and kind of product;
5. The tactile switches/tact switch come with multiple cap and color options, excellent tactile feedback and high reliability dome technology.

Applications: computer , telephone ,PDA ,DVD digital camera ,audio equipments ,instrument and meter equipment ,autoimmunization equipments control etc

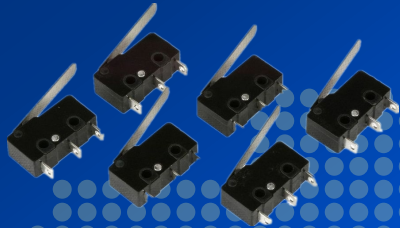
Detector switches' Features:

Small size and light weight

It has life and more operating forces can be applied such as lightly force

They can operate all types of computer mouse, Mobile phones, cameras, VCR, stereo and car radio equipment and PDAs.

Micro switches, Encoder, slide switches and Dial switches' introduction



Micro-switches' Features

1. Small size and light weight
2. It has life and more operating forces can be applied such as lightly force
3. Good feeling and more lever applied
4. It can drive the contact rapidly and directly in certain travel with certain action force in order to switch over the circuit



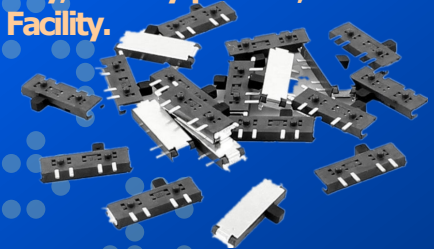
Encoder Excellent rotary operational feeling and long life

- A sensitive switch with tiny contact clearance, instant action and tinny travel
- Can drive the contact rapidly and directly in certain travel with certain action force in order to switch over the circuit

Applications: Widely used for electronic product, instrument and meter, household Appliance as computer mouse, automobile electronic product, communication facility, Military product, test instrument, gas water heater, gas burner and small household Facility.

Slide Switches' Features:

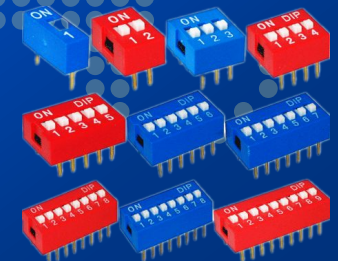
1. All kinds of variable levels design;
2. Assembling ways: DIP and SMT;
3. The switch operating force equality, good feeling;
4. The terminals state can be design according to requirements



Dial Switches' Feature

1. rotary switch with decimal and sixteen hexadecimal;
2. Good feeling

Application: CNC equipment, radio communications, instrumentation (time relay, temperature controller, control and automation for the counter), preset circuit



JACK'S Introduction

| | | | | | | |
|----------------|---|--|---|---|---|---|
| Phone Jack |  |  |  |  |  |  |
| DC Jack |  |  |  |  |  |  |
| RCA Jack |  |  |  |  |  | |
| AC Jack |  |  |  |  |  |  |
| Miniature Jack |  |  |  |  | | |

Connector's Introduction

| | |
|--|-------------------|
|  | Micro USB |
|  | Mini USB |
|  | USB Connector |
|  | HDMI Connector |
|  | Battery connector |
|  | Pin/Row |
|  | FFC/FPC |
|  | Deck |

Into Fouce

Living in the age of electricity, KKG serves socity in surpring ways through its little body



WHERE we are?

- Almost all of the electronic product, instrument and meter, household Appliance as computer mouse, automobile electronic product, communication facility, Military product, test instrument, gas water heater, gas burner, small household Facility, Cash Registers, Computer Keyboards, Industrial Equipment And Man-Machine Interface

The Electronic Component Manufacturers Develop With Green Earth---KKG



INFORMATION ELECTRONICS



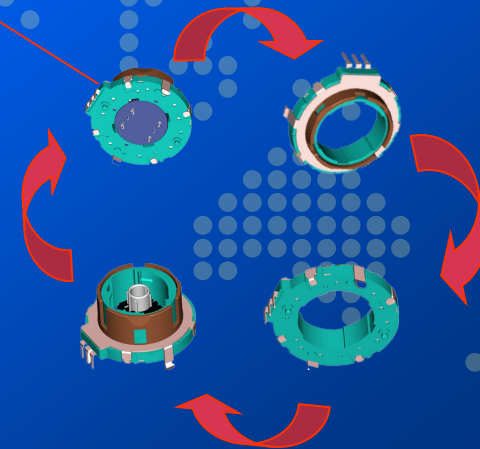
From ATM, Pos-system, ticket machine, Tablet to Notebook, KKG active in areas of information system. KKG's productions is type utility and wide coverage.

AUTOMOTIVE ELECTRONICAS

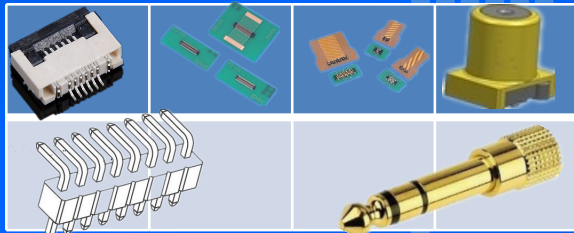
CAR ELECTRONICS



Recommended application auto switch: car audio products (volume, tone, regulator adjustment), audio and video equipment (VCRs, CD player, MD player and other editing system), remote control of car navigation system

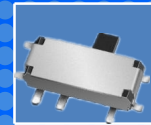


HOUSEHOLD ELECTRICAL



KKG creates a comfortable life with its technology for human. Lamp switches, Battery connector, Waterproof switches.....KKG continuously to improve itself to make contribution to the society.

INDUSTRIAL MACHINERY



The field of electronic IC, SMD components is widely used in industrial robot. And it has been the second industrial after the car and car parts which demand for electronic industry. KKG take advantage of it to make amazing progress in SMD components.

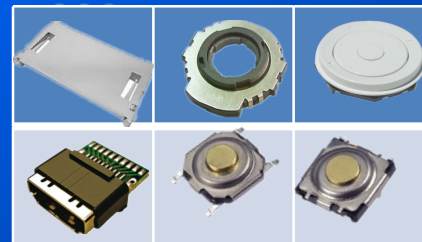
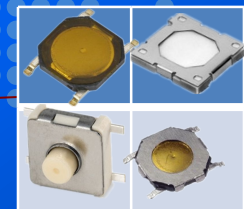
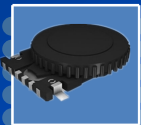
E-COMMUNICATION



Since E-communication appeared in the world for the first time, it has showed a vital force and therefore become a trend for its transmission speed, large information capacity, low cost and high efficiency and so on. KKG taking this opportunity to proposal and develop deck, FPC、 board to board and switches

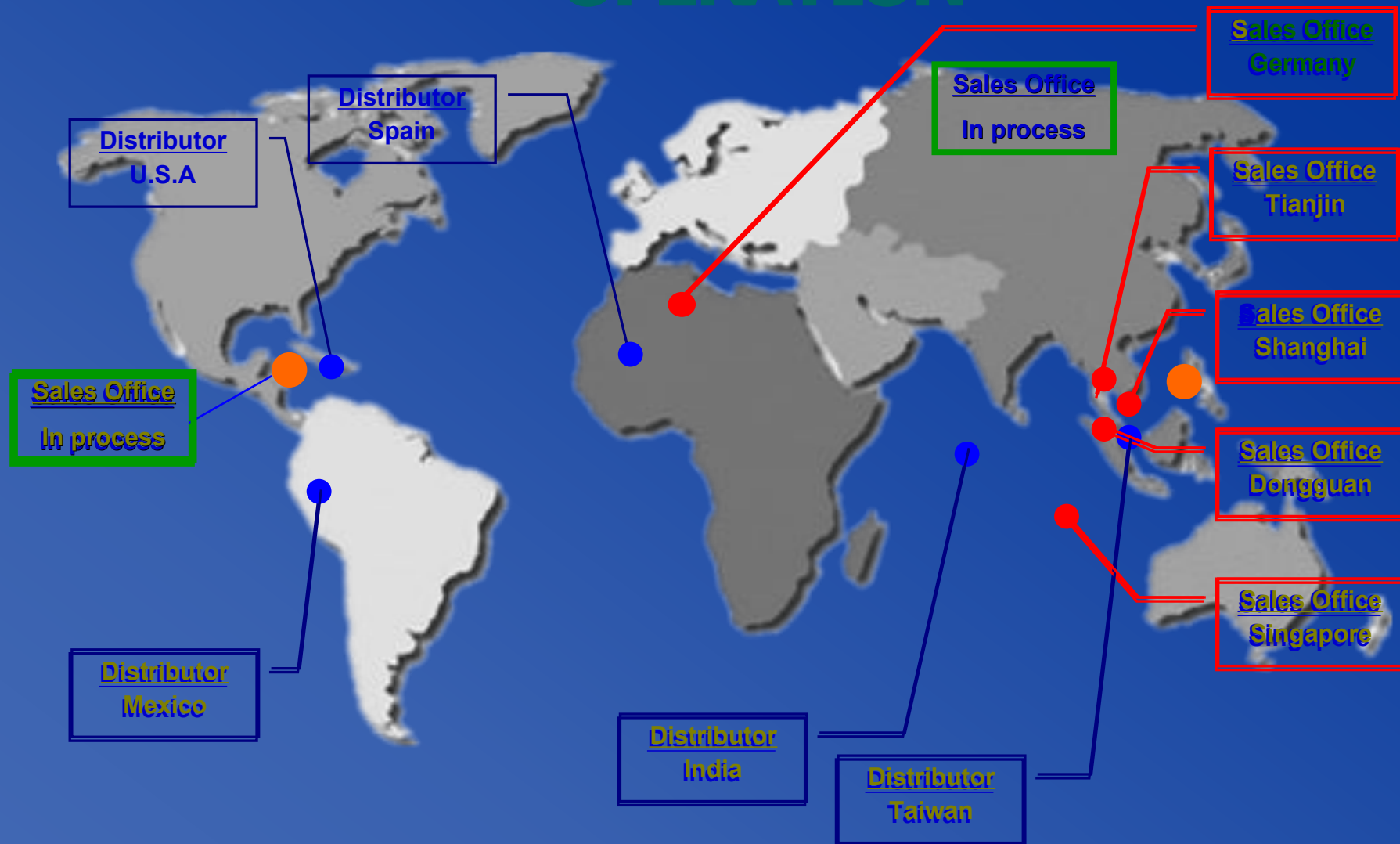


ENTERTAINMENT



KKG R&D FPC and HDMI
which own High speed
transfer function to
meet the demand of
the entertainment
which high pixel
multifunctional
continuous improve .

A FULL-SCALE INTERNATIONAL OPERATION



THE END



We are well-prepared!!
---BEWIN ELECTRONICS